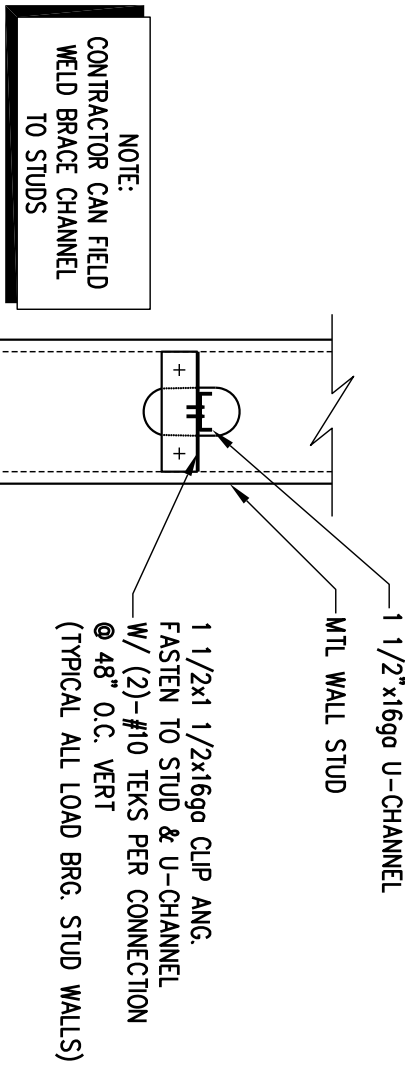
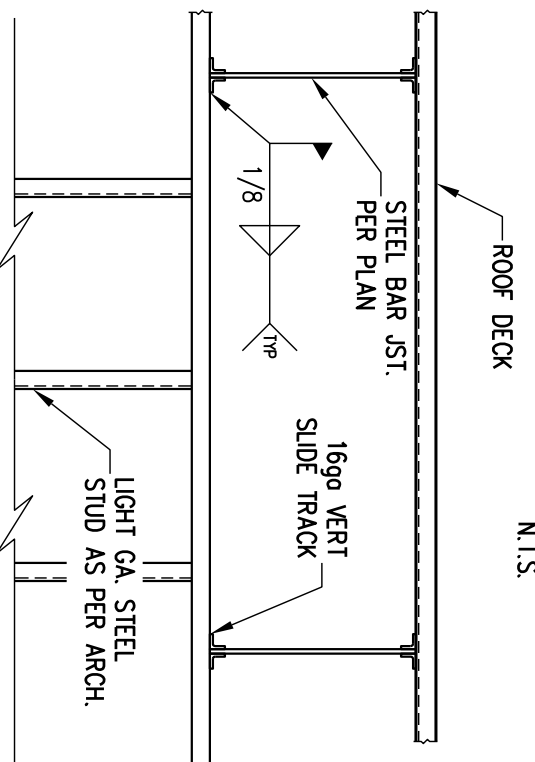


TYPICAL VERTICAL SLIDE TRACK DETAIL
N.T.S.

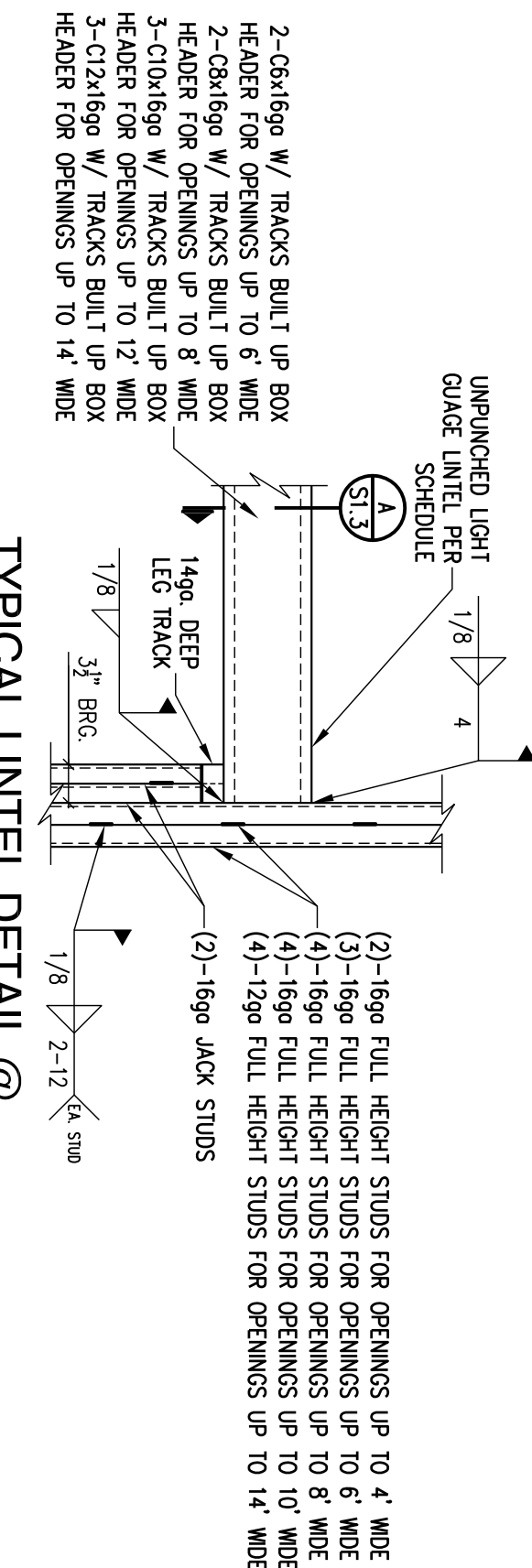
TYPICAL STEEL STUD
PARTITION WALL SUPPORT DETAIL II
N.T.S.



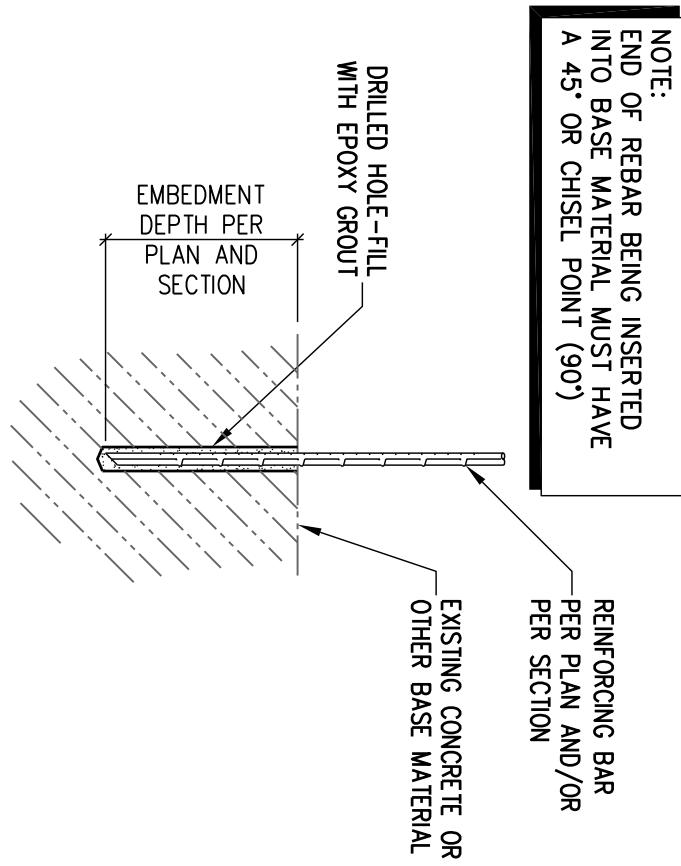
TYPICAL MTL STUD BRACE CHANNEL
N.T.S.



TYPICAL STEEL STUD
PARTITION WALL SUPPORT DETAIL I
N.T.S.



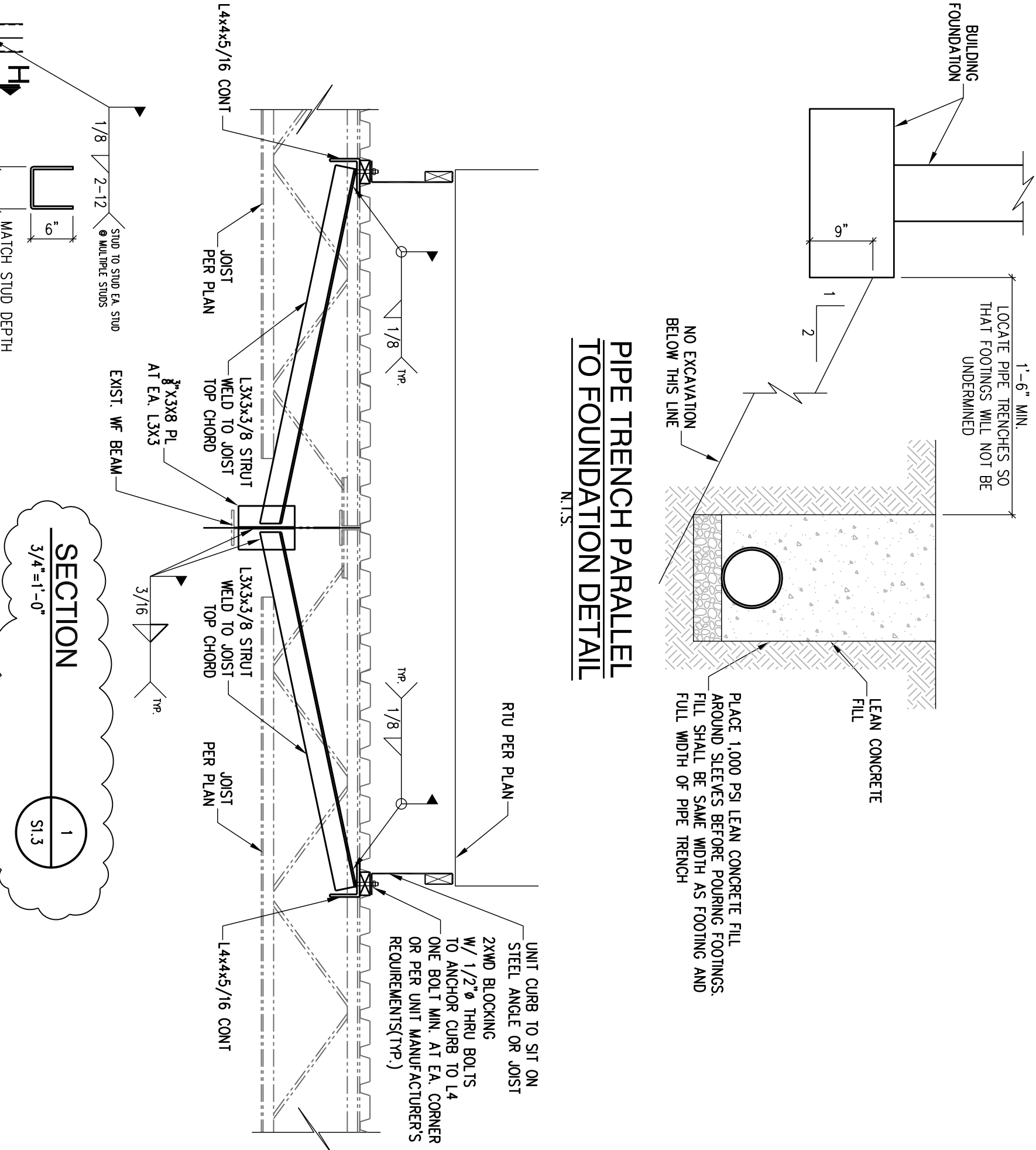
TYPICAL UNTEL DETAIL @
METAL STUD WALL



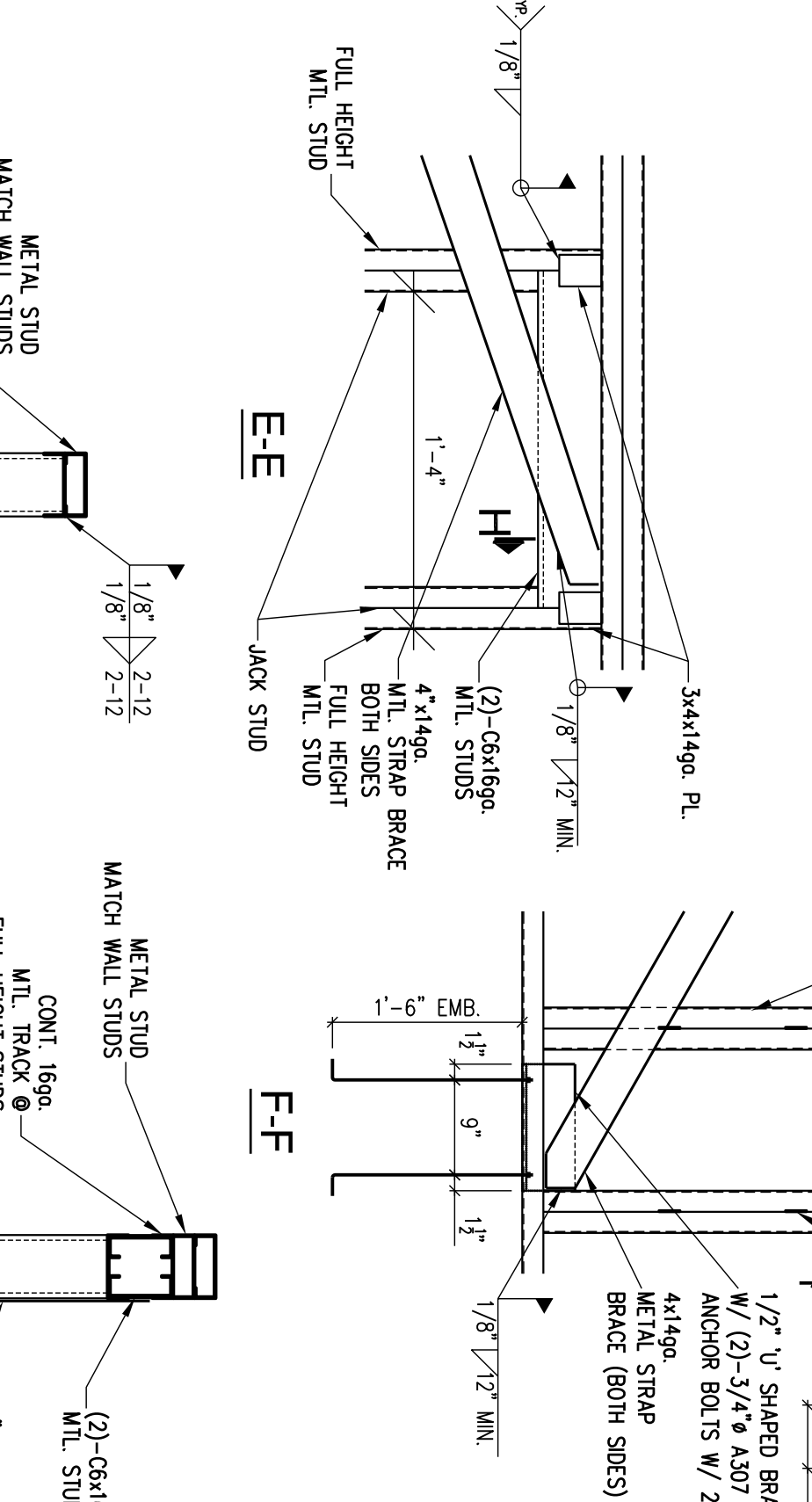
1. DRILL HOLE TO THE REQUIRED DEPTH: APPROX. 1/8" WIDER DIAMETER THAN THE REBAR.
2. CLEAN OUT DUST AND FRAGMENTS, PREFERABLY USING A WET DRY VACUUM OR COMPRESSED AIR AND A NYLON BRUSH. DO NOT USE A WIRE BRUSH.
3. INSERT APPROPRIATE EPOXY GROUT INTO PRE-DRILLED HOLE IN BASE MATERIAL.
4. PLACE CHISEL POINTED END OF REBAR ON TOP OF EPOXY GROUT AND DRIVE REBAR TO BOTTOM OF HOLE.
5. CARE SHOULD BE TAKEN NOT TO DISTURB THE INSTALLED REBAR UNTIL EPOXY GROUT HAS CURED.

TYPICAL EPOXY DOWELING DETAIL

PIPE TRENCH PARALLEL
TO FOUNDATION DETAIL
N.T.S.

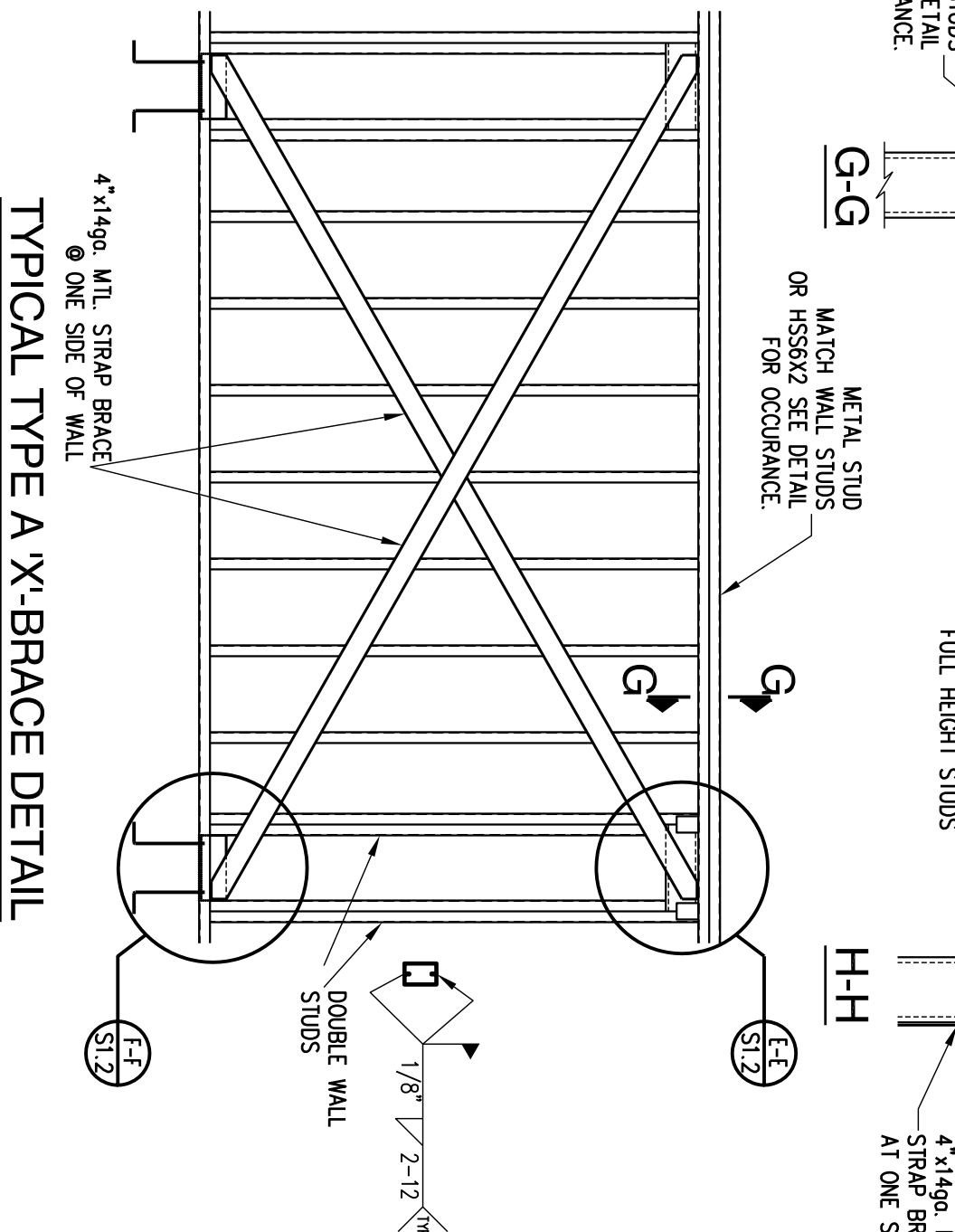


SECTION
1-1/2\"/>

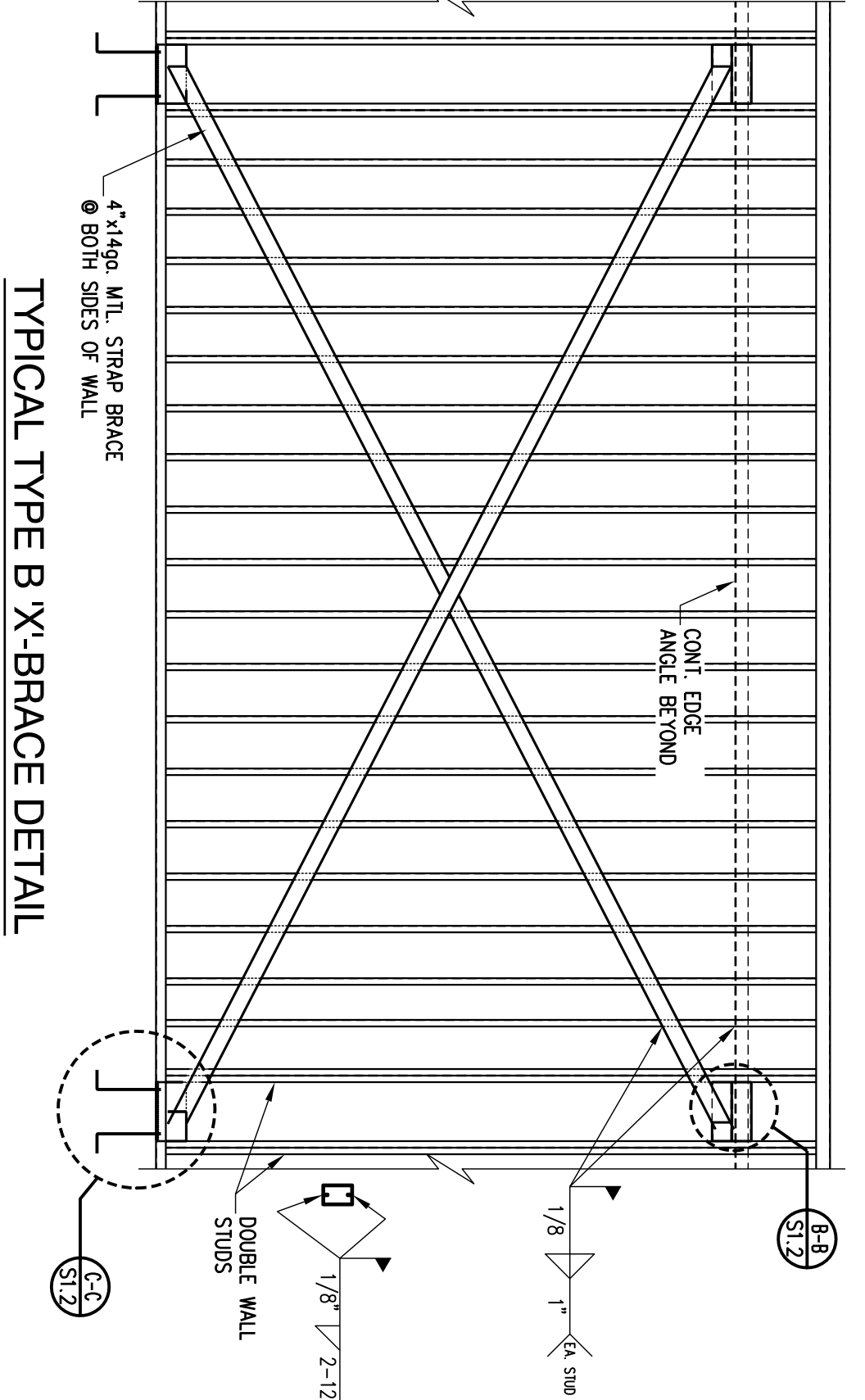


TYPICAL ROOF TOP UNIT FRAMING
N.T.S.

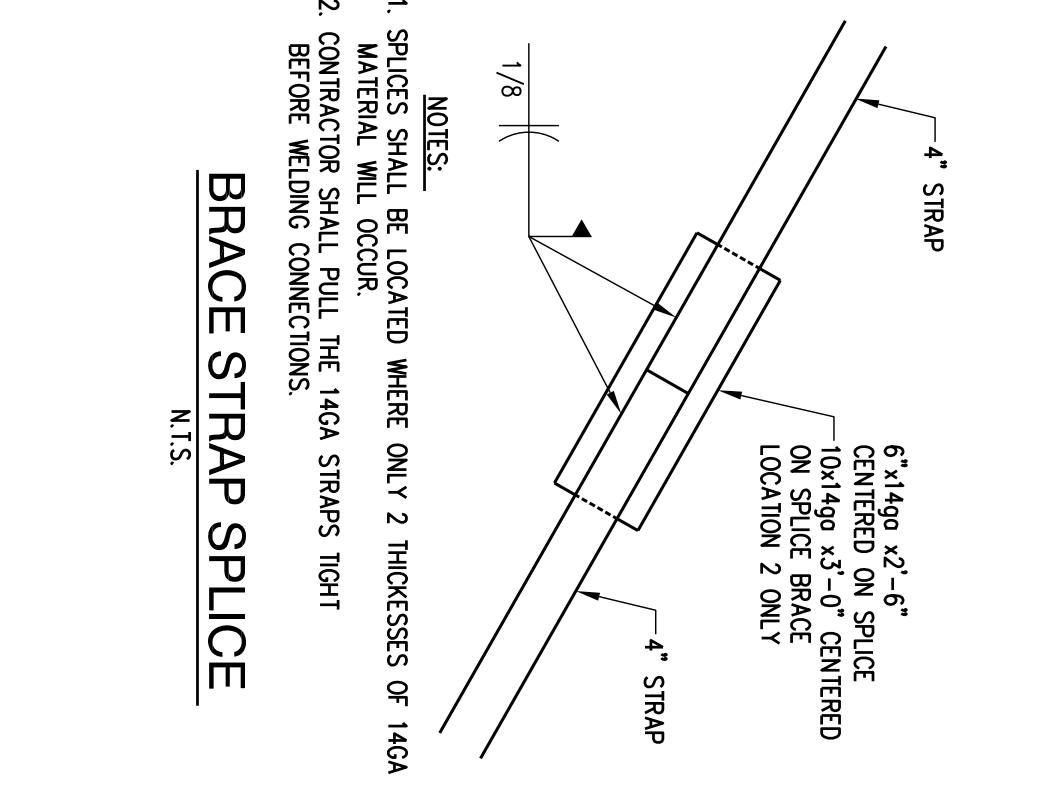
SECTION AA



TYPICAL TYPE A X-BRACE DETAIL
N.T.S.

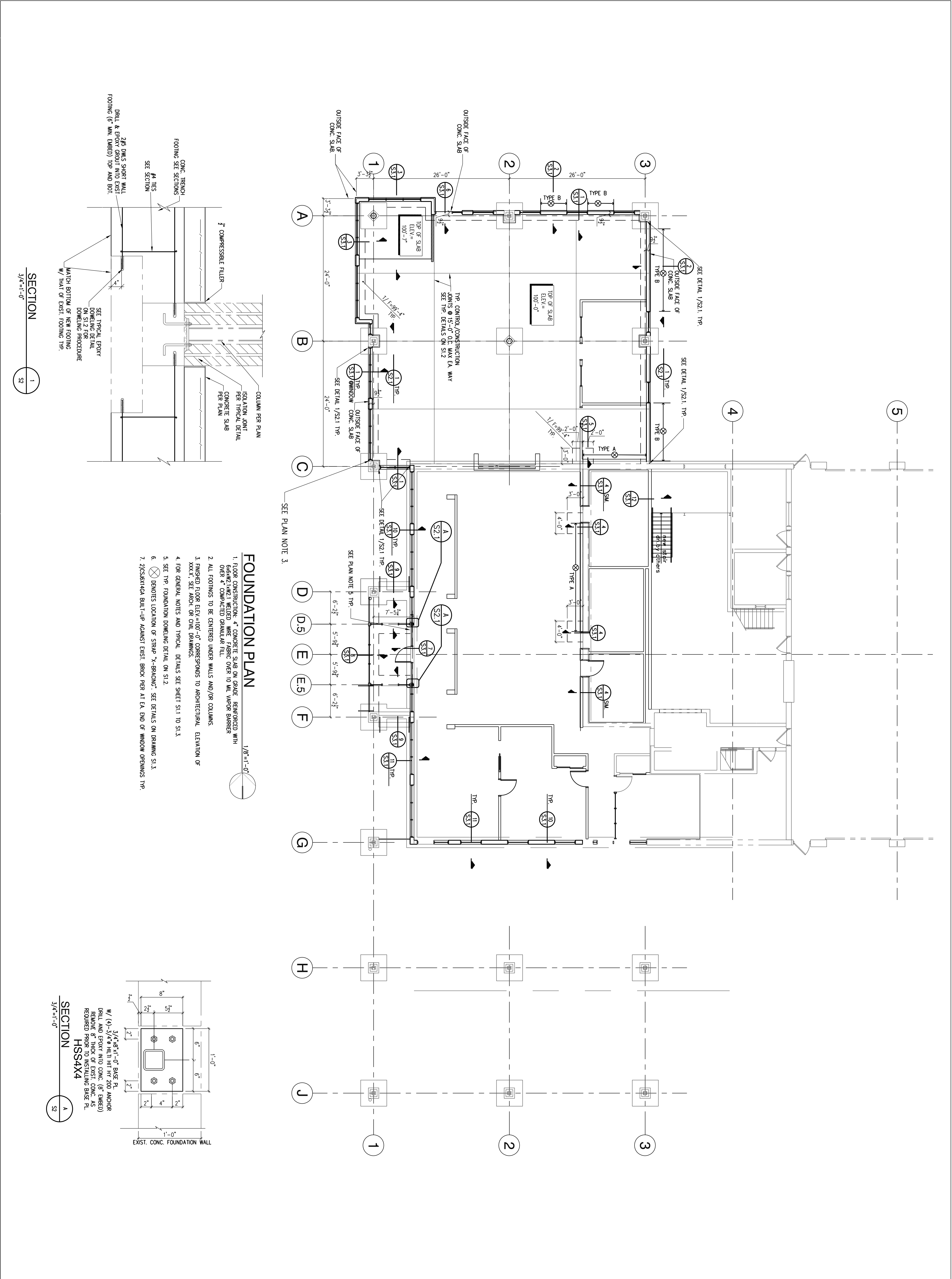


TYPICAL TYPE B X-BRACE DETAIL
N.T.S.



BRACE STRAP SPLICE
N.T.S.

- NOTES:
1. SPLICES SHALL BE LOCATED WHERE ONLY 2 THICKNESSES OF 14GA MATERIAL WILL OCCUR.
 2. CORRECTOR SHALL PULL THE 14GA STRAPS TIGHT BEFORE WELDING CONNECTIONS.



NOT FOR CONSTRUCTION

The Professional Engineer seal affixed to this sheet certifies that the design and construction of the foundation and related structures shown on this sheet were prepared by or under the direct supervision and control of the Engineer, and that the Engineer is a duly licensed Professional Engineer in the State of Missouri. The Engineer's seal and signature shall be placed on this sheet and shall not be considered prepared by or the responsibility of the contractor.

Copyright © 2020 Summit Engineering Group, LLC

ARCHITECT:
ZWICK + GANDT
ARCHITECTURE, INC
info@zgarchi-ell.com
ph: 314-982-9292

CONTRACTOR:
RECON CONSTRUCTORS
1100 S. Main Street
St. Louis, MO 63103
314-554-5263

STRUCTURAL ENGINEER:
SUMMIT ENGINEERING GROUP LLC
eng@summit-engr.com
314-325-4899

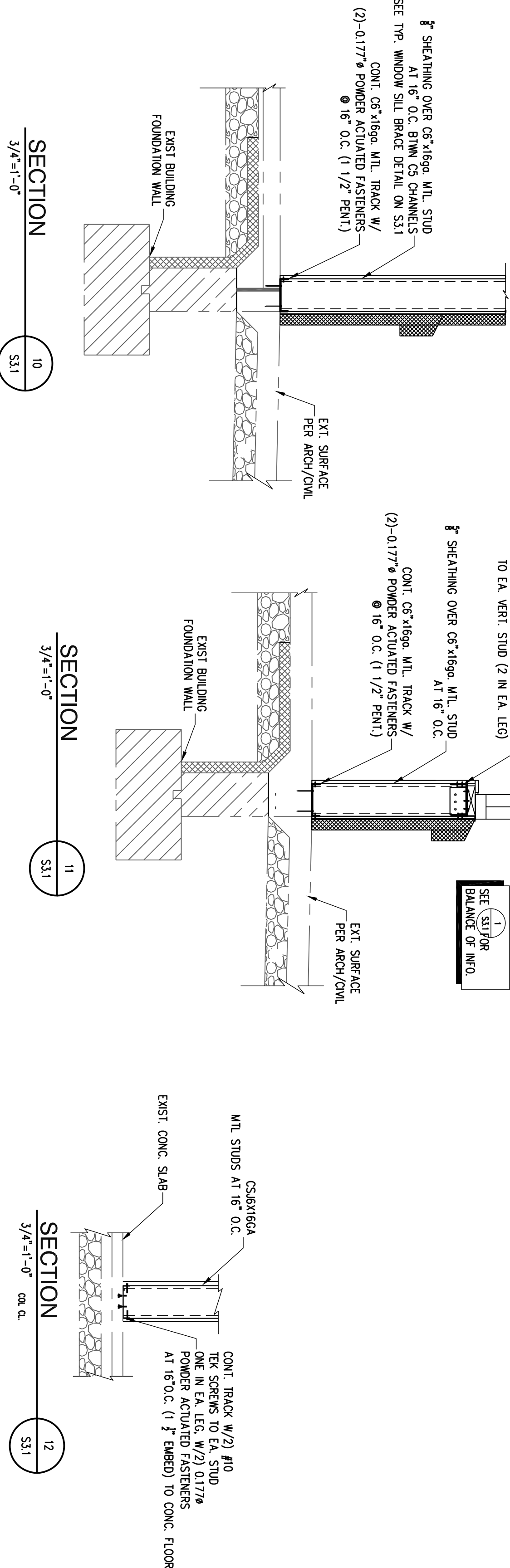
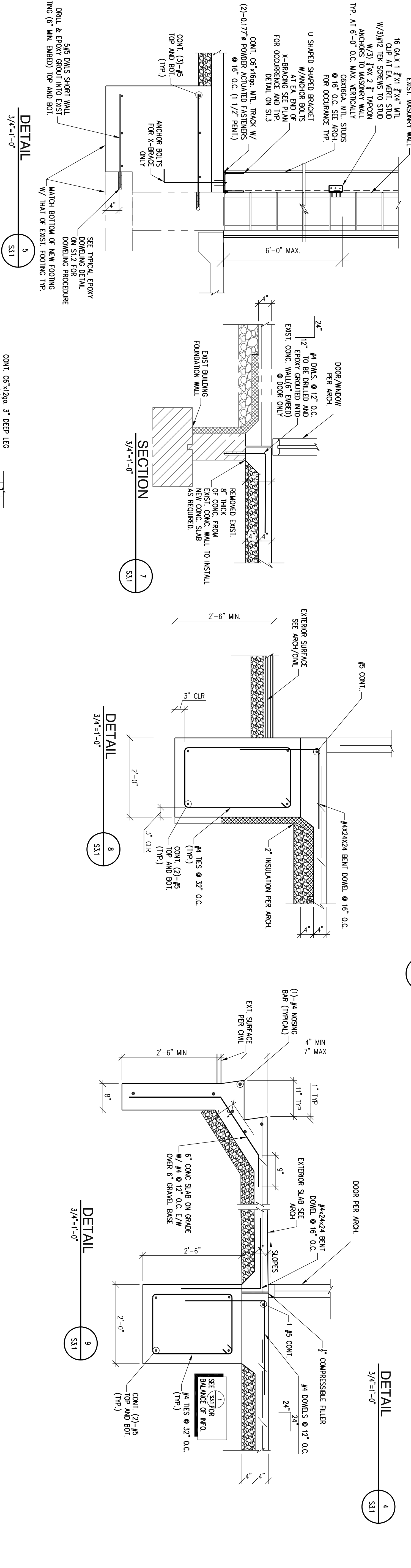
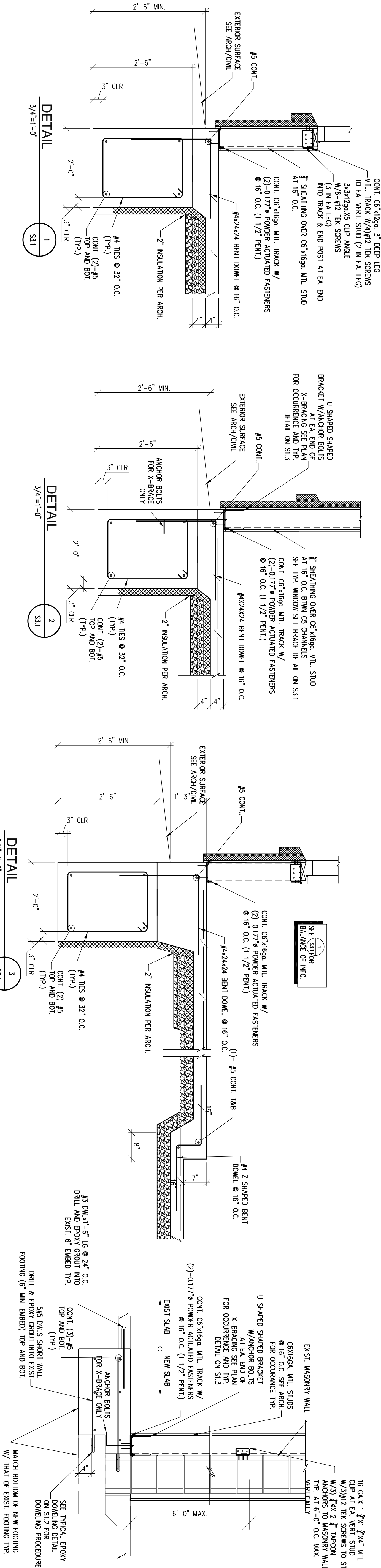
USED CAR BUILDING RENOVATIONS

5655 S LINDBERGH BLVD
ST. LOUIS, MO, 63123



PROJECT NUMBER:
20034.00

S2.1



NOT FOR CONSTRUCTION

The professional engineer seal attached to this sheet certifies that the design and construction of the building shown on this sheet complies with the provisions of the building code and that the engineer is a duly licensed professional engineer in the State of Missouri. The engineer's seal and signature are required for the building to be constructed in accordance with the design shown on this sheet. The engineer is not responsible for the construction of the building shown on this sheet.

ARCHITECT:
ZWICK & GANDT
ARCHITECTURE, INC.
info@zwick-gandt.com
ph: 314-982-9222

CONTRACTOR:
RECON CONSTRUCTORS
info@reconconstructors.com
ph: 314-555-5283

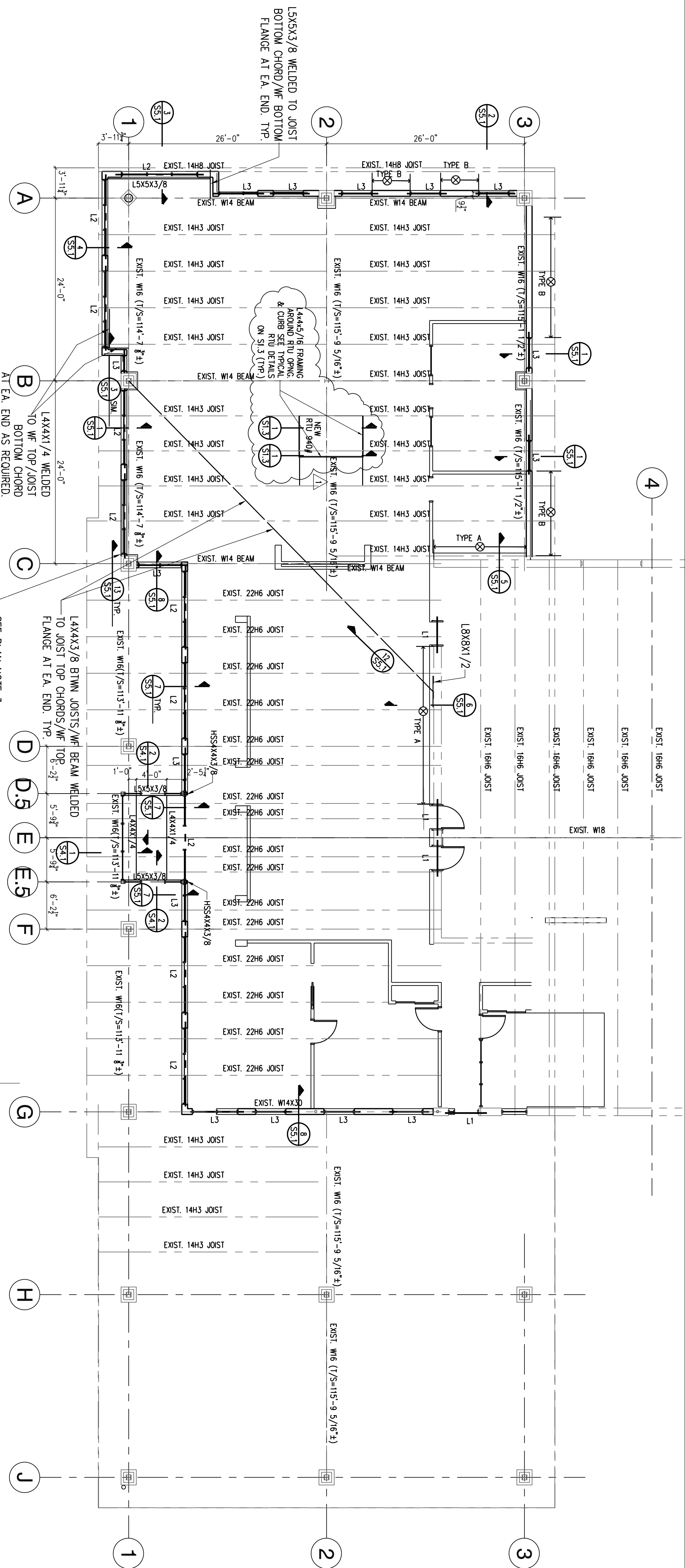
STRUCTURAL ENGINEER:
SUMMIT ENGINEERING GROUP LLC
eng@summit-engr.com
314-325-4899

USED CAR BUILDING
RENOVATIONS
5655 S LINDBERGH BLVD
ST. LOUIS, MO, 63123



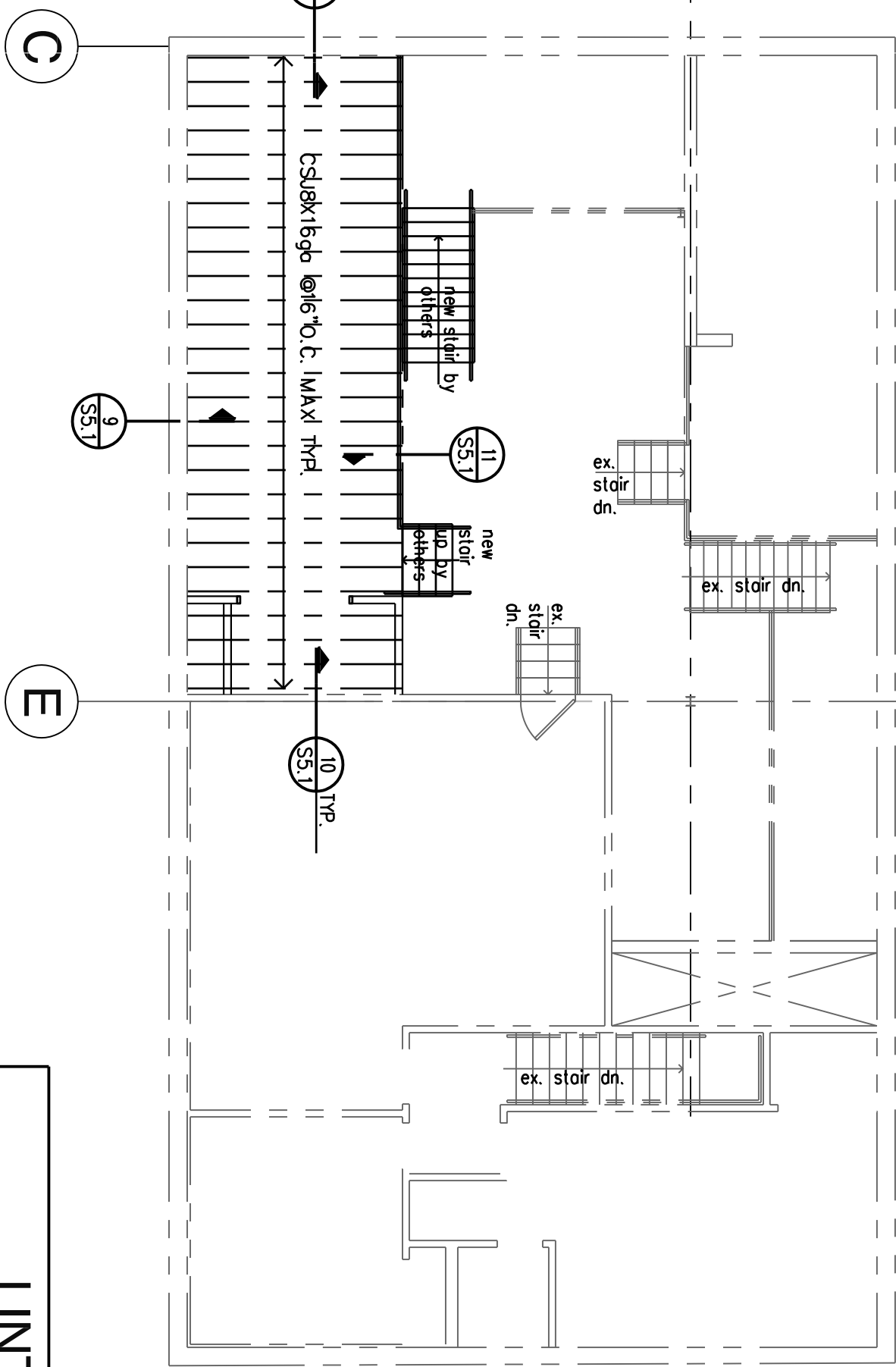
PROJECT NUMBER:
20094.00

S3.1



ROOF FRAMING PLAN

1. FOR GENERAL NOTES AND TYPICAL DETAILS SEE SHEET S1.1 TO S1.3.
2. DENOTES LOCATION OF SIMP "X"-BRACING". SEE DETAILS ON DRAWING S1.3.
3. 2X5CSBX16GA BUILT-UP AGAINST EXIST. BRICK PIER AT EA. END OF WINDOW OPENINGS TYP.

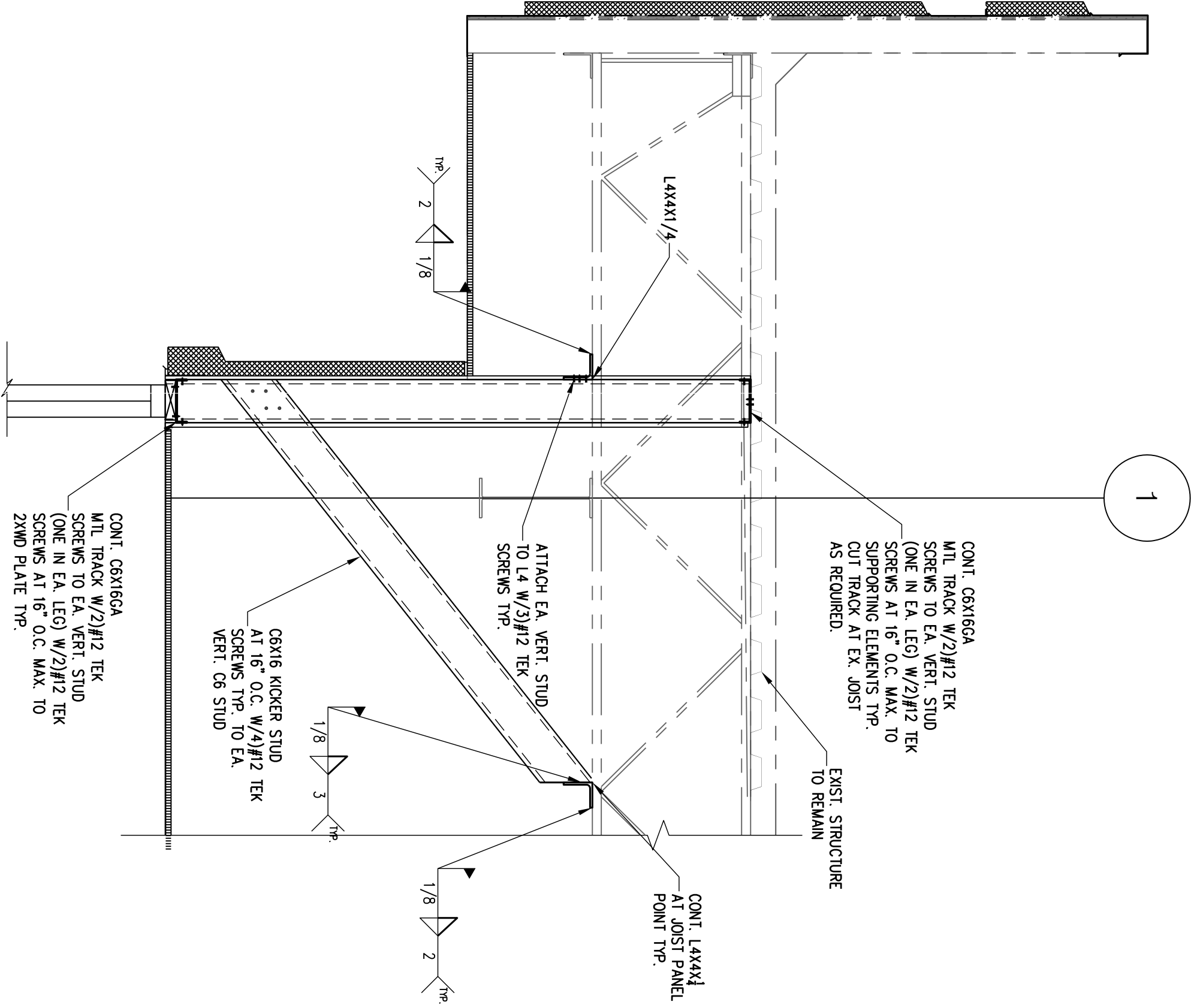


MEZZANINE FRAMING PLAN

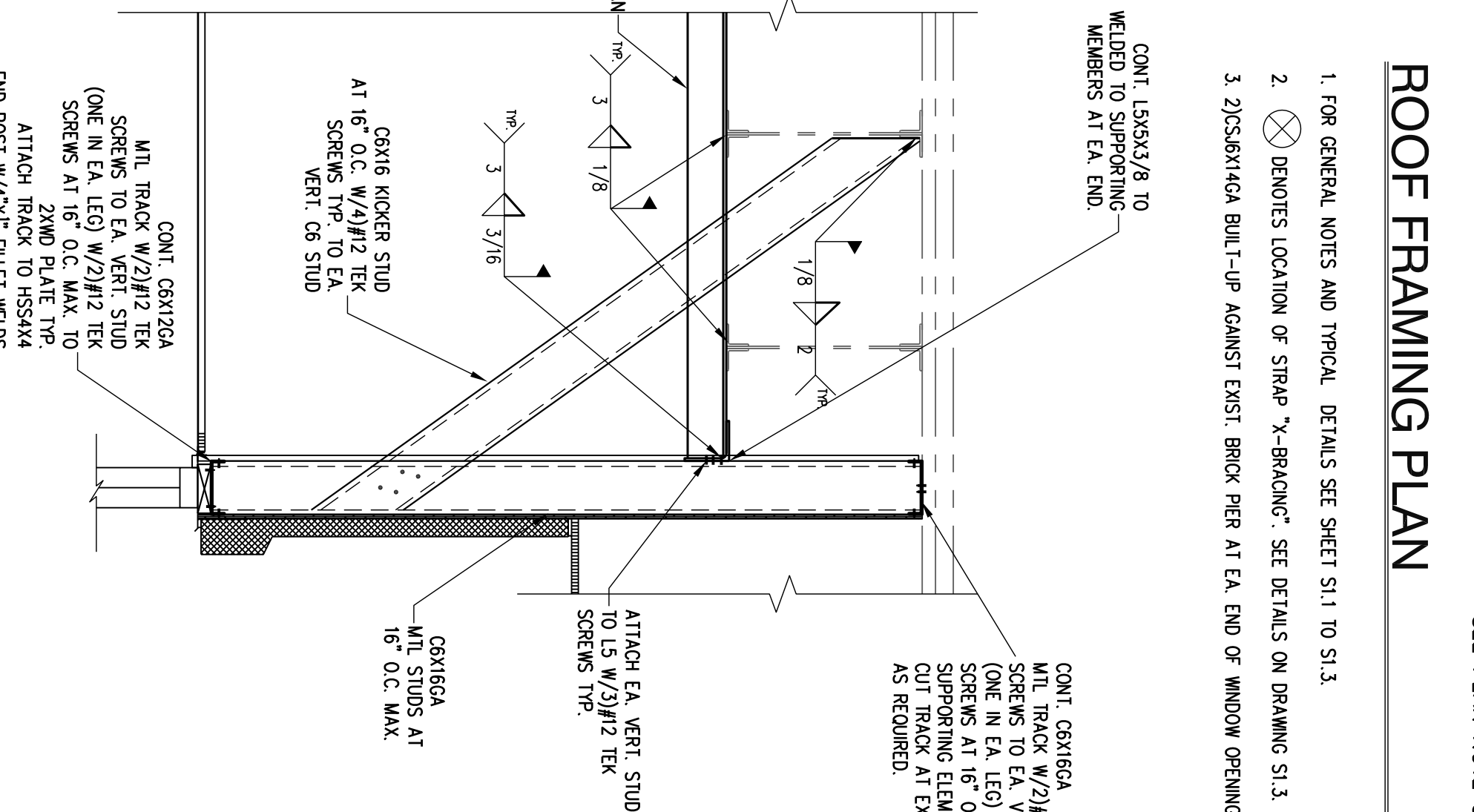
1. FLOOR CONSTRUCTION: 3/4" T&G PLYWOOD OR ORIENTED STRAND BOARD (TYP) OVER 1" ASPEN/FLY ASH SPAN-SPACING 16" O.C. AT PANEL EDGES AND AT 12" O.C. AT INTERIOR.
2. FINISH FLOOR ELEVATION = SEE ARCH.
3. FOR GENERAL NOTES AND TYPICAL DETAILS SEE SHEET S1.1 TO S1.3.

LINTEL SCHEDULE

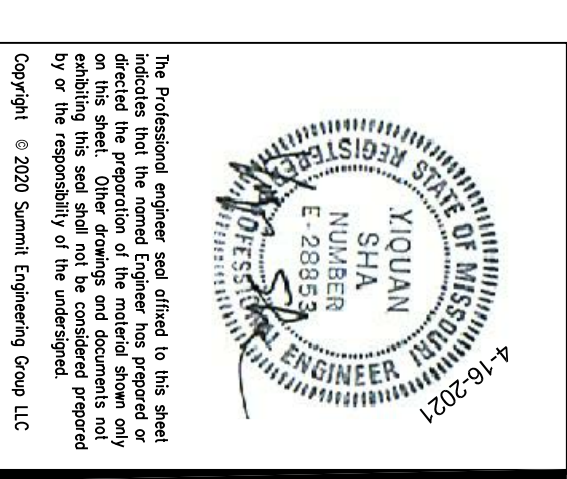
MARK	SIZE	DESCRIPTION
L1	2L5X5X3/8	
L2	3XCSBX16GA STUDS + 1XCSX16GA WLT. TRACK BOXED HEADER	
L3	2XCS15.5XBS16GA STUDS + 1XCSX16GA WLT. TRACK BOXED HEADER	
L4		



SECTION 1



SECTION 2



ARCHITECT:
ZWICK + GANDT
ARCHITECTURE, INC
info@zgwarch-llc.com
ph: 314-982-9292

CONTRACTOR:
RECON CONSTRUCTORS
info@reconconstructors.com
314-565-5263

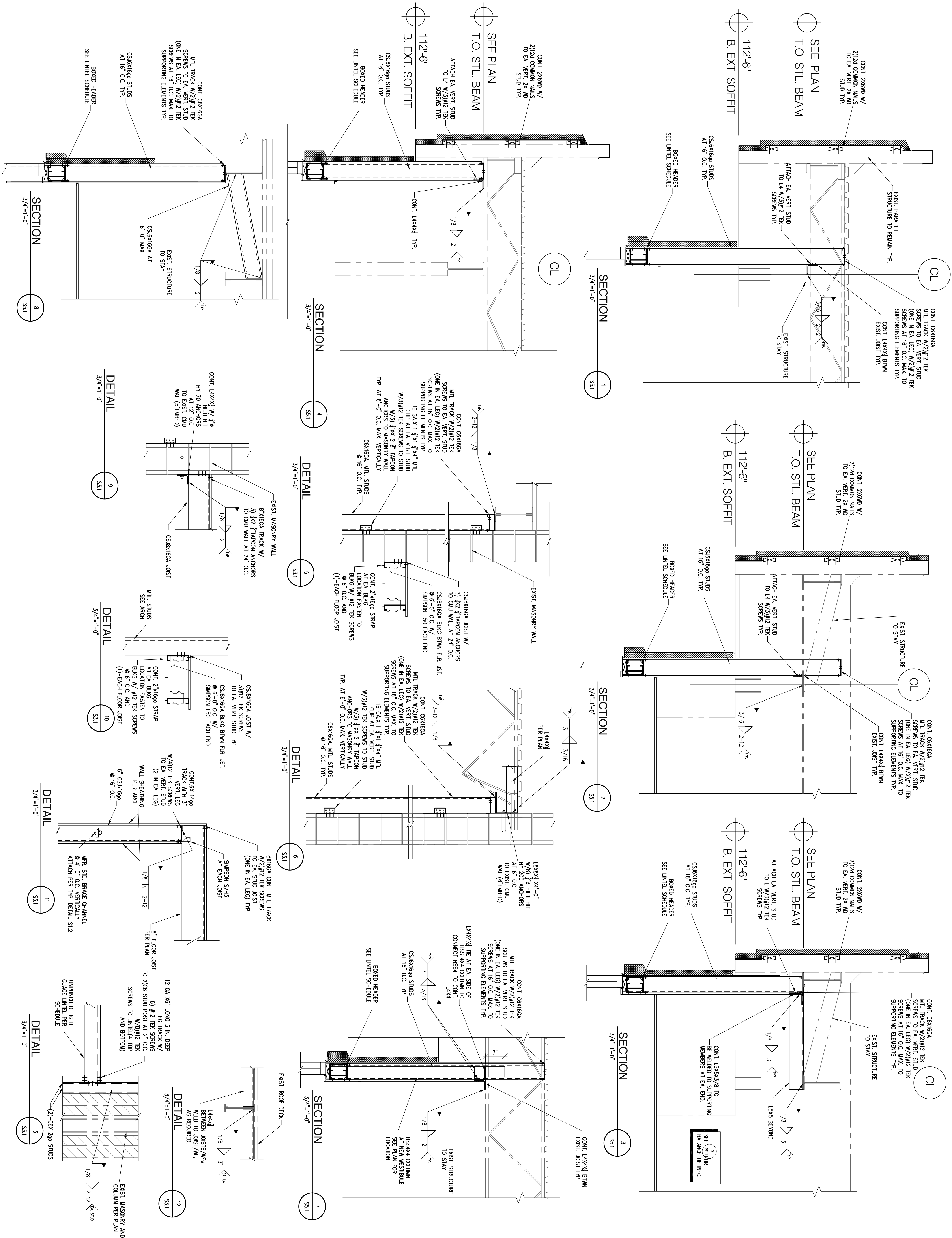
STRUCTURAL ENGINEER:
SUMMIT ENGINEERING GROUP LLC
eng@summit-engg.com
314-325-4899

USED CAR BUILDING RENOVATIONS
5655 S LINDBERGH BLVD
ST. LOUIS, MO, 63123



REVISION #1	4-16-2021
PROJECT NUMBER:	20034.00

S4.1



NOT FOR CONSTRUCTION

The Professional engineer seal affixed to this sheet indicates that the named Engineer has prepared and directed the preparation of the material shown on this sheet. Other drawings and documents not exhibiting this seal shall not be considered prepared by or the responsibility of the undersigned.

Copyright © 2020 Summit Engineering Group LLC

ARCHITECT:
ZWICK & GANDT
ARCHITECTURE, INC
info@zwgarch-llc.com
ph: 314-662-9292

CONTRACTOR:
REICON CONSTRUCTORS
info@reiconconstructors.com
314-664-3363

STRUCTURAL ENGINEER:
SUMMIT ENGINEERING
GROUP LLC
eng@summit-engr.com
314-323-4899

USED CAR BUILDING RENOVATIONS

5655 S LINDBERGH BLVD
ST. LOUIS, MO, 63123



PROJECT NUMBER:
20034.00

ד.ס.